

BUILDING BRISTOL'S FUTURE

**BRISTOL
LABOUR**

Bristol Labour Group
Manifesto 2024





- 02** Foreword by Tom Renhard
- 04** How your council tax is spent in Bristol
- 06** The challenges we face
- 08** What has your Labour council done for you?
- 10** Our plan to build Bristol's future
- 12** Building Brighter Futures
- 14** Moving Forward Together
- 16** Protecting the Planet
- 18** A Safe Inclusive Bristol
- 20** Our City, Our Future
- 22** Meet the team
- 24** Get in touch and get involved

CONTENTS



“Labour has a plan to bring opportunity and prosperity to every part of Bristol.”

FOREWORD

by Tom Renhard

Leader of Bristol Labour Group

I love our city. I'm excited to be raising my young daughter here. Bristol has a unique energy and spark that drives us all to think and do things differently. I want Bristol to remain ahead of the pack; continuing to show the country how to grow a green economy, and where more of our city's success is fairly shared, so talent and ability can shine regardless of postcode.

Despite 14 years of Conservative failure, we're protecting public services, endeavouring to assist people struggling in this Tory cost-of-living crisis and are building thousands of new homes to help those trapped in insecure or inadequate housing. We're building new schools, upgrading leisure centres, retrofitting homes, supporting our cultural venues and sports teams, and strategising better transport solutions. We're working with the NHS to deliver more accessible services – including NHS dentistry and a new elective surgery centre – when and where you need them, and are focused on practical solutions to curb crime and disorder.

We've taken brave decisions to invest and protect because it's our job as community champions to nurture opportunity, grow a greener economy, support people in tough times and make sure we're ready to face the future.

Under my leadership, Bristol Labour's plan will secure a safer, healthier, more inclusive city for everyone who lives, studies, works, and invests here. Unlike the Green Party and the Conservatives, who block and oppose, Labour has a plan to bring opportunity and prosperity to every part of Bristol.

HOW YOUR COUNCIL TAX IS SPENT IN BRISTOL

Labour is proud to have set an ambitious, balanced budget for Bristol once again.

We're protecting front-line services from Tory austerity, building over 3,000 more council homes in the next five years, and supporting Bristol's worst-off with a 100% discount on their council tax bills, the only major UK city to do so.

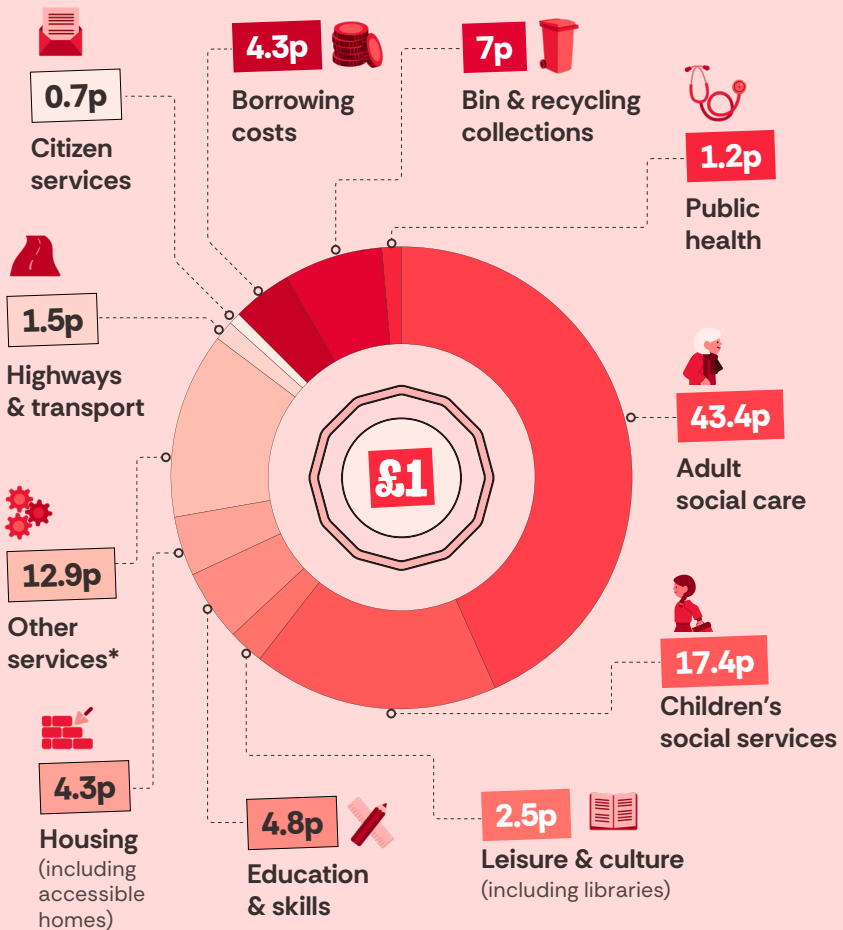
Our first priority is always to provide sound, responsible financial management for Bristol. Despite Tory mismanagement nationally which has led to council shortfalls running into the billions, we're making best use of every pound of income we receive.

Conversely, the Green Party has failed to put forward their own solutions to Bristol's challenges, with excuses that don't hold up. They've had the same opportunities as the Conservatives and Liberal Democrats, yet they can't or won't face up to tough decisions or come up with alternative financial proposals.

They proved they shouldn't be trusted with the public purse when in 2022, they proposed cutting the Flood Defence Scheme budget with no plans to replenish it. And in Brighton, Green leadership led to rubbish piling up on the streets, asylum seekers sleeping rough during Covid, and mammoth budget deficits left for Labour to sort out.

Every pound counts

The council receives around 53% of its core funding from council tax. The net revenue budget, which is for core day-to-day services for 2024 to 2025 is £530.1 million. Of this, council tax contributes £282.4 million. The chart below shows how an average household's council tax is spent per pound.




*Council tax also contributes to other services, including democratic services, electoral registration, coroner services, benefits services, council tax and business rates administration, collection, and increases in inflation.

THE CHALLENGES WE FACE

and how we're tackling them


Cost of Living Crisis



The Conservatives have trashed Britain's economy. Bills and mortgages have skyrocketed, and in our growing city, people are struggling to get by.

That's why we're protecting our **100% Council Tax Reduction Scheme**, creating jobs and have made Bristol a **Real Living Wage city**.

The Housing Emergency



We're facing an epidemic of homelessness, where the chance of a decent affordable home or getting a foothold on the housing ladder are too often just a dream.

That's why we're **regulating landlords**, building new **council houses**, and **retrofitting many more**.

Health and Care Pressure

Seeing an NHS dentist or GP is increasingly **difficult**, waiting lists are rising and the pressure on social care is unprecedented.

We are partnering with Bristol's public services to help ensure **you can access the care you need, when you need it.**



Community Safety

Police visibility has reduced and crime rates are going up, with conviction rates lower. All while knife crime and violence against women and girls continue to increase.

We're designing a **safer city centre**, improving CCTV and partnering on **youth engagement** projects.



An Overheating Planet

Rishi Sunak wants oil and gas drilling and coal mines, whilst Bristol is investing in a more sustainable future.

Whether creating good jobs in the green economy, better public transport, or nurturing our biodiversity, **Bristol Labour won't stand by.**



WHAT HAS YOUR LABOUR COUNCIL DONE FOR YOU?

£771M FOR CLEAN ENERGY

Bold action on climate change bringing down bills and taking **150,000 tonnes of CO₂ out of the atmosphere**; invested in community-owned wind turbines; solar panels on council homes.

12,500+ HOMES BUILT SINCE 2016

12,500+ homes built, most on brownfield land; **biggest council-owned scheme in a generation at Hengrove**, including community facilities, park and **clean energy centre**.

DECLARED ECOLOGICAL EMERGENCY

A commitment made to **double land dedicated to nature to 30% by 2030**; a **brownfield-first housing policy**, and **over 94,000 trees planted since 2016**.

COST OF LIVING SAFETY NET

100+ Welcoming Spaces, protected the Council Tax Reduction Scheme so **34,000 of Bristol's lowest income families don't pay**, and additional **£8m to help the worst-off**.

NEW RAILWAY STATIONS DELIVERED

Built **Portway Park and Ride station**, Bristol's first new train station in almost a century, and **started work on a new Ashley Down station**, with plans for more.

CHAMPIONED COMMUNITY LEADERS

Awarded over **60 buildings** to community led organisations, and **invested over £8m** to support their running costs and resilience including **Welcome Spaces**.

INVESTMENT IN COUNCIL HOMES

Investing **£100m in energy efficiency** to reduce heating bills and CO₂; **£83m on bathroom upgrades**; **£6m for communal areas**; and **£1m to refurbish estate playparks**.

STANDING UP FOR PRIVATE RENTERS

Lobbying Government for **Rent Controls**; cracking down on **rogue landlords**; funding to **retrofit private renters' homes**; landlord licensing schemes; action on anti-benefits discrimination.

FIXED POTHOLES & CLEANED STREETS

Thousands of potholes repaired since 2016 and set up the Big Tidy in 2019: **cleaned 2,089 streets**, 919 fly-tips, 15,300 illegal graffiti tags and issued 640+ fines.

CHILDREN & YOUNG PEOPLE SUPPORTED

£12m new Youth Zone opening in south Bristol; protected funding for 27 libraries, 12 maintained nurseries and 22 children's centres; School Streets programme rolled out.

COMMUNITY DRIVEN REGENERATION

Promoting a bold vision for Castle Park, the City Centre, and St Judes. Secured national funding for the **inclusive, community-led regeneration of Southmead and Filwood**.

CELEBRATED OUR UNIQUE CULTURE

Backed Bristol Pride, St Pauls' Carnival and the Harbour Festival; secured protections for nightclubs; and backed our football clubs' ambitious plans for the future.

£.95M TEMPLEMEADS INVESTMENT

Doubling capacity bringing twice as many trains in and out of Bristol, together with 10,000 homes, 22,000 jobs and **£1.6bn brought into the local economy**.

PROMOTED A FAIRER CITY

More representative recruitment of magistrates, 'Stepping Up' leadership talent pipeline for people from minority backgrounds and Living Wage for 43,000 workers.

NEW NHS DENTISTS SECURED

In partnership with local communities, **successfully campaigned** for the reopening of **NHS Dentists in St Paul's and Southmead**.

INVESTING IN PLACES TO PLAY

Prioritising play, we're investing £7m into playgrounds across the city, providing new facilities, doing more to meet needs of girls and disabled children, **ensuring play is accessible to all**.



OUR PLAN

- ✓ **Building Brighter Futures**
- ✓ **Moving Forward Together**
- ✓ **Protecting the Planet**
- ✓ **A Safe Inclusive Bristol**
- ✓ **Our City, Our Future**



BUILDING BRIGHTER FUTURES



An inclusive, diverse city supporting wellbeing and opportunity

We're building thousands of safe and secure new homes to rent and buy, upgrading and retrofitting council housing, investing in new schools, the Caring Economy, our Children's Centres, maintained nurseries, cultural and sporting venues, leisure centres and a thriving city centre. We will take forward the recommendations of the Living Rent Commission and stand up for renters. We're securing the future of community buildings through asset transfer and supporting community-led regeneration to ensure Bristol remains a great place to live, study, work and invest in.

Our plan to build brighter futures:

- ✓ Building new council and social housing, community-led housing and homes to buy, with a brownfield-first approach, alongside the services and facilities communities need.
- ✓ Upgrading our social housing to ensure healthy, safe, secure, climate-responsible homes with lower bills, higher housing standards, and a lettings policy prioritising local people.
- ✓ Protecting renters, campaigning for rent controls, addressing homelessness, reducing waiting lists and 100% discount on council tax bills for residents with the lowest incomes.
- ✓ Helping children get the best start in life with more school places and better provision for SEND children; improving access to education and skills in our colleges and universities.
- ✓ Investing in adult social care and early years through growing the workforce, better training and progression opportunities; protecting our libraries, Children's Centres, nurseries, leisure centres, sport and play spaces.



**We'll deliver
over 3,000
new council
homes in the
next 5 years**



MOVING FORWARD TOGETHER



Fixing public transport: bold choices for a better-connected future

We will explore ways to bring buses into public ownership and start now on the transport solutions of tomorrow, seeking ways to take back control of our highway maintenance work through insourcing. We will roll out more school streets and work with neighbouring authorities and strategic partners towards a longer-term mass transit solution for our city that is accessible and connects people and communities to jobs and opportunities.

Our plan for a better connected future:

- ✓ Improving Bristol's buses by working to bring them back under public ownership and championing integrated ticketing; to get more bus routes back into communities.
- ✓ Regenerating Temple Quarter and its state-of-the-art rail hub serving our city and wider region; building new local stations, improving our rail network.
- ✓ Mass transit: exploring solutions, led by the evidence, working with partners to develop the services that will connect our city for decades to come.
- ✓ Promoting active travel, with safer walking routes and better cycling infrastructure, including a new cycling centre – improving safety, air quality, health and wellbeing.
- ✓ Upgrading and restoring our ageing infrastructure, including Bristol's historic bridges and harbour; investing in road maintenance and pothole repair.



We will work to bring buses back into public ownership and progress mass transit



PROTECTING THE PLANET



Tackling climate change, protecting nature, championing biodiversity

With £771m planned investment in decarbonisation and 1,000 new real living wage jobs through Bristol City Leap, we lead the way with the lowest carbon footprint per capita of any UK major city and continue to implement our One City Ecological Emergency Action Plan. We've maintained our position as leading core city for recycling. We're upskilling workers, creating clean, green jobs, innovating on heating schemes and solar, backing opportunities for community ownership of energy, retrofitting and upgrading social housing, planting trees, protecting open spaces, managing more space for nature and wild swimming spots.

Our plan to protect the planet:

- ✓ Progressing the work of City Leap and the decarbonisation of Bristol, working to meet our ambitious target of Net Zero by 2030, including developing district heat networks.
- ✓ Reducing energy consumption and lowering bills through retrofitting homes; installation schemes for solar panels; bringing empty buildings back into use.
- ✓ Promoting biodiversity; planting even more trees, investing in nature, food growing and environmental stewardship, including our waterways, coastline, and open spaces.
- ✓ Partnering with community organisations on sustainable projects to improve energy efficiency and adopt renewable energy solutions, such as wind turbines and heat pumps.
- ✓ Promoting the creation of well-paid unionised jobs in the green economy and local opportunities for training and lifelong learning to access skills of the future.



We will remain one of Britain's most sustainable cities and achieve net zero by 2030



A SAFE INCLUSIVE BRISTOL



Working with partners to reduce crime and disorder, with better public protection

We all know how important it is to feel safe in our home and community. We will bring together the police, public services, local organisations and communities, to deal with offending, reduce hate crime, support victims, prevent crime and rebuild trust with communities that are disproportionately affected. We will support and invest in youth services, giving our young people, throughout Bristol, every opportunity to thrive.

Our plan for a safe inclusive Bristol

- ✓ Supporting city centre, public space and neighbourhood safety, with more visible and responsive police and embedded PCSOs, CCTV and action to prevent knife crime.
- ✓ Reducing violence against women and girls and improving awareness; supporting people experiencing domestic abuse or at risk of exploitation and modern slavery.
- ✓ Tackling anti-social behaviour including fly-tipping, littering and graffiti tags, by hiring more enforcement officers and increasing fines; in partnership, tackle illegal off-road bikes.
- ✓ Promoting youth safety and school inclusion, a continued commitment for high quality youth services, inclusive education, and partnership on the new Youth Zone.
- ✓ Convening and leading a multi-agency approach to supporting vulnerable residents, with a One City strategy that protects all of Bristol's communities.

We will put your safety first, deter offending, and promote respect



OUR CITY OUR FUTURE



Celebrating our unique city and making Bristol's big decisions together

We will ensure reliable council-led services, from waste and recycling, to adult and children's social care. We will engage residents in shaping their communities and collaborate with the public and third sector, businesses, sports clubs, and cultural organisations to nurture our city's economy, celebrate our traditions, and ensure that Bristol remains a city to be proud of.

Our plan for our city and our future

- ✓ Supporting and attracting business and inward investment into Bristol to sustain our prosperous local economy, to create jobs and opportunity throughout the city.
- ✓ A partnership approach to ensuring accessible services, including NHS dentistry and GPs, mental health support, social prescribing, and a new elective treatment centre.
- ✓ Championing our iconic Bristol venues, including our football stadiums, Bristol Beacon, and a new arena; ensuring we remain a first-choice visitor destination.
- ✓ Promoting Bristol's diversity and talent by ensuring opportunities in all our communities, for an inclusive and creative city where everyone can belong and thrive.
- ✓ Creating a safe, attractive, well-lit and welcoming city centre that is accessible and vibrant, with sensitive and responsive regeneration



We will listen and work in partnership to secure our city's success



Meet the team

Ashley



Isaac
Evans



Susannah
Harlow



Amirah
Cole

Avonmouth & Lawrence Weston



Don
Alexander



Thomas
Blenkinsop



Zoe
Peat

Bedminster



Emily
Clarke



Adam
Potter

Bishopston & Ashley Down



Eileen
Means



Andrew
Milton

Bishopsworth



Kacper
Kedzierski



Sue
Kollar

Brislington East



Katja
Hornchen



Tim
Rippington

Brislington West



David
Jepson



Carolyn
Magson

Central



Matt
Redmore



Sarah
Swingler

Clifton



Dan
McTiernan



Elena
Dirik

Clifton Down



Nick
Smith



Tristan
Harris

Cotham



Robert
Knowles-Leak



Sean
Smyth

Easton



Nardia
Ferguson



Shahzad
Sarfraz

Eastville



Marley
Bennett



Teresa
Stratford

Filwood



Rob
Logan



Lisa
Durston

Frome Vale



Al
Al-Maghrabi



Louis
Martin

Hartcliffe & Withywood



Kerry
Bailes



Paul
Goggin



Kirsty
Tait

Henbury & Brentry



Wendy
Baverstock



Peter
Brindle

Hengrove & Whitchurch Park



Greg
Dowling



Ajmal
Miah



Brandon
Gage

Hillfields



Kelvin
Blake



Ellie
King

Horfield



Tom
Renhard



Deborah
Vittori Garman

Hotwells & Harbourside



Alex
Bullett

Knowle



Shahab
Aktar



Christopher
Orlik

Lawrence Hill



Amal
Ali



Mohamed
Omer

Lockleaze



Deniece
Dixon



Abdirahman
Farah

Redland



Tom
Lydon



James
Nethercote

Southmead



Kye
Dudd



Kaz
Self

Southville



Will
Sainty



Miriam
Venner

St George Central



Henry
Palmer



Sally
Bowman

St George Troopers Hill



Fabian
Breckels

St George West



Carole
Johnson

Stockwood



Harry
Burnet



Simon
Crew

Stoke Bishop



David
Mullaney



Barry
Trahar

Westbury-on-Trym & Henleaze



Miranda
McCabe



Ellie
Milone



Tom
Phipps

Windmill Hill



Charlie
Mercer




Su
Murley

BUILDING BRISTOL'S FUTURE

starts
with you

**BRISTOL
LABOUR**

Visit our website

Scan this QR code
with your phone
to get in touch 



or visit labourbristol.co.uk

Get involved

Let us know how
you can help out
with the campaign




Vote Labour

On your ballots,
use all of your
votes for Labour



REGISTER FOR A POSTAL VOTE

Scan this code
with your phone
to register for
a postal vote 



The deadline to
register is 5pm
on 17 April 2024

or visit gov.uk/apply-postal-vote





Promoted by Sonia Wright on behalf of Bristol Labour
at Unit B, Bradley Pavilions, Pear Tree Road, Bristol, BS32 0BQ.
Printed by Azimuth Print at 2A, Princess St, Bristol BS3 4AG.

VOTE X LABOUR

Vote  **Labour**

Thursday 2 May

Promoted by Sonia Wright on behalf of Bristol Labour at Unit B, Bradley Pavilions, Pear Tree Road, Bristol, BS32 0BQ.
Printed by Azimuth Print at 2A, Princess St, Bristol BS3 4AG.